

REVISIONS				
REV	DESCRIPTION OF REVISION	ECN No.	DATE	APPROVED
A	INITIAL RELEASE	—	07/08/12	M. Dong

TECHNICAL DATA

Electrical

Impedance	50 Ω
Frequency range	0~27 GHz
VSWR	1.10:1 (DC to 18GHz) 1.15:1 (18GHz to 27GHz)

Contact resistance

-centre contact	≤3mΩ
-outer contact	≤2mΩ
Insulation resistance	≥5000MΩ

Mechanical & Environmental

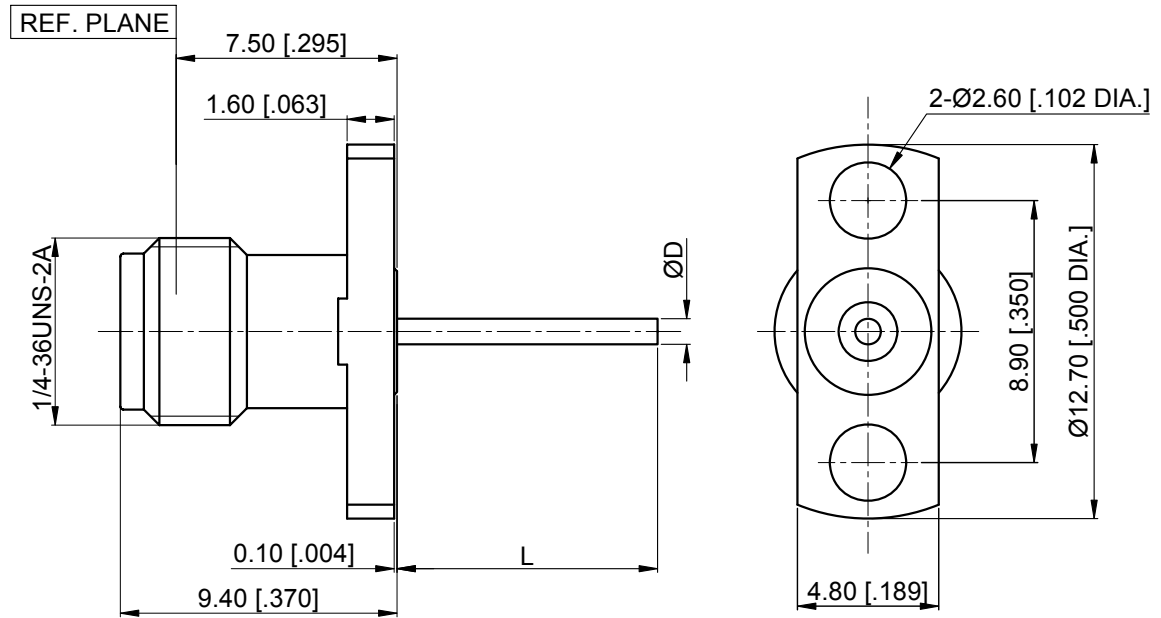
Durability (matings)	>500
Temperature range	-55 °C ~ +165 °C
RoHS Compliant	Yes

Material & Finish

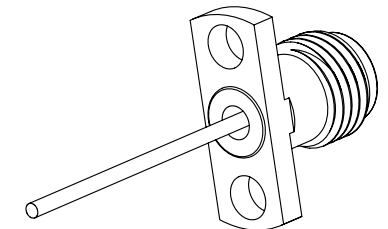
Body	Stainless Steel (SU303), Passivated
Pin Contact	Beryllium Copper Alloy, Gold-plated
Insulator	PTFE

Interface Standards

SMA	MIL-STD-348A
-----	--------------



Part Number	ØD PIN	L
C14214057A	0.64 [.025]	18 [.709]
C14214057B	0.87 [.034]	26 [1.024]
C14214057C	0.87 [.034]	10.92 [.430]



NOTES:

- ALL SPECIFICATIONS ARE SUBJECT TO CHANGE WITHOUT NOTICE AT ANY TIME
- UNLESS OTHERWISE SPECIFIED ALL DIMENSIONS ARE NOMINAL.

DRAWN:	W. Shen	07/08/12
CHECKED:	K. Liu	07/08/12
APPROVED:	M. Dong	07/08/12
UNLESS OTHERWISE SPECIFIED, DIMENSIONS ARE IN MILLIMETERS (INCHES). UNLESS OTHERWISE SPECIFIED DIMENSIONAL TOLERANCES ARE: .XX ±0.13 [.005"] .X ±0.20 [.008"] X ±0.50 [.019"]		
ANGULAR TOLERANCES ARE: ALL±1°		

TITLE:

SMA Straight Female,
2 Hole Flange,
Air Line Through the Wall

DO NOT SCALE
DRAWING

PROJECTION:

 www.connor.com			
SIZE: A4	SCALE: 4:1	SHEET: 1/1	REV: A