

| REVISIONS | | | | |
|-----------|-------------------------|---------|----------|----------|
| REV | DESCRIPTION OF REVISION | ECN No. | DATE | APPROVED |
| A | INITIAL RELEASE | --- | 03/09/12 | M. Dong |

TECHNICAL DATA

Electrical

| | |
|-----------------|-------------|
| Impedance | 50 Ω |
| Frequency range | 0~27 GHz |
| VSWR | 1.20:1 |

Mechanical & Environmental

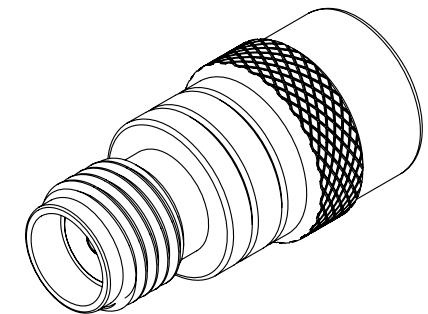
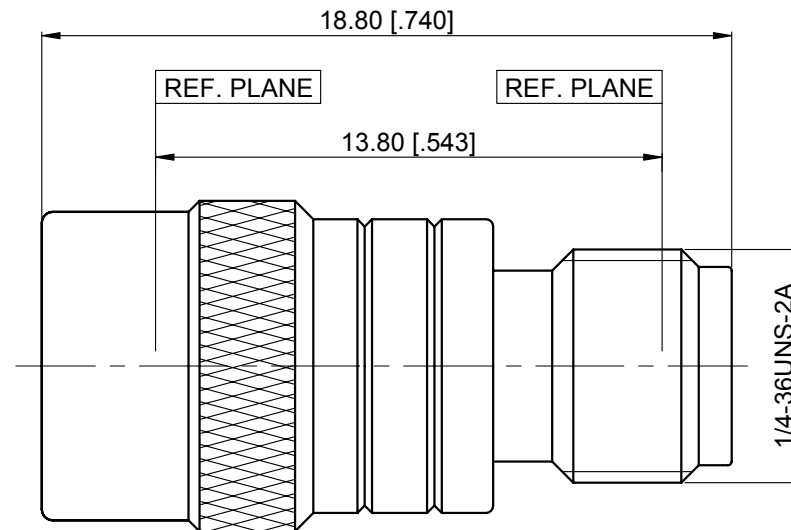
| | |
|----------------------|------------------|
| Durability (matings) | >500 |
| Temperature range | -55 °C ~ +165 °C |
| RoHS Compliant | Yes |

Material & Finish

| | |
|-------------|-------------------------------------|
| Body | Stainless Steel (SU303), Passivated |
| Pin Contact | Beryllium Copper Alloy, Gold-plated |
| Insulator | PEI, PTFE |

Interface Standards

| | |
|-----|--------------|
| SMA | MIL-STD-348A |
|-----|--------------|



NOTES:

1. ALL SPECIFICATIONS ARE SUBJECT TO CHANGE WITHOUT NOTICE AT ANY TIME
2. UNLESS OTHERWISE SPECIFIED ALL DIMENSIONS ARE NOMINAL.

| | | |
|--|----------------|----------|
| DRAWN: | W. Shen | 03/09/12 |
| CHECKED: | K. Liu | 03/09/12 |
| APPROVED: | M. Dong | 03/09/12 |
| UNLESS OTHERWISE SPECIFIED, DIMENSIONS ARE IN MILLIMETERS [INCHES]. UNLESS OTHERWISE SPECIFIED DIMENSIONAL TOLERANCES ARE: | | |
| .XX | ±0.13 [0.005"] | |
| .X | ±0.20 [0.008"] | |
| X | ±0.50 [0.019"] | |
| ANGULAR TOLERANCES ARE: ALL=±1° | | |

TITLE:

Quick Match Adapter,
SMA Male to SMA Female
Push Type

DO NOT SCALE
DRAWING

PROJECTION:

| | | | |
|--|--------|-------------------|------|
| CONNOR [®] | | | |
| www.connor.com | | | |
| PART No.: | | C141142118 | |
| SIZE: | SCALE: | SHEET: | REV: |
| A4 | 5:1 | 1/1 | A |